

OFFICIAL BASKETBALL BOX SCORE -- G A M E T O T A L S

IUPUI vs Butler University
 12-10-97 7 p.m. at Hinkle Fieldhouse

VISITORS: IUPUI (5-4)

No.	N A M E	TOT-FG		3-PT		FT	FTA	REBOUNDS			PF	TP	A	TO	BLK	S	MIN	
		FG	FGA	FG	FGA			OF	DE	TOT								
30	CARLISLE, Don	f	4	9	1	2	1	2	1	2	3	4	10	0	1	0	25	
33	WILLIAMS, Derek	f	0	2	0	0	0	0	1	0	1	4	0	0	2	0	12	
44	OVERSTREET, Marcus	c	0	2	0	0	0	0	1	1	2	2	0	0	0	0	4	
00	REESE, J.T.	g	5	14	1	2	0	2	1	0	1	2	11	3	4	0	26	
34	KNOX, Carlos	g	0	5	0	2	1	2	0	1	1	1	1	1	4	0	13	
04	BROWN, Jermaine		0	3	0	1	0	0	1	1	2	0	0	0	0	0	4	
10	GARDNER, Jermaine		1	2	0	0	1	2	2	1	3	2	3	0	1	0	8	
20	DAVID, Nick		1	3	1	3	0	0	0	0	0	0	3	1	0	0	21	
21	THOMAS, Rodney		2	6	2	5	2	2	0	3	3	4	8	0	1	0	26	
23	WITHERSPOON, Mohamme		2	5	0	0	1	3	3	3	6	1	5	0	0	0	17	
25	DICKEY, David		0	2	0	0	0	1	2	1	3	2	0	0	1	3	22	
54	PRICE, Charles		0	5	0	0	0	0	0	2	2	4	0	1	1	1	14	
55	CRICK, Ryan		1	5	1	1	0	0	0	0	0	2	3	1	0	0	8	
TEAM REBOUNDS.....								1	1	2								
TOTALS			16	63	6	16	6	14	13	16	29	28	44	7	15	4	5	200

TOTAL FG% 1st Half:	8-32	.250	2nd Half:	8-31	.258	Game:	.254	DEADBALL
3-Pt. FG% 1st Half:	2-6	.333	2nd Half:	4-10	.400	Game:	.375	REBOUNDS
F Throw % 1st Half:	1-3	.333	2nd Half:	5-11	.455	Game:	.429	4, 2

HOME TEAM: Butler University (6-3)

No.	N A M E	TOT-FG		3-PT		FT	FTA	REBOUNDS			PF	TP	A	TO	BLK	S	MIN	
		FG	FGA	FG	FGA			OF	DE	TOT								
13	DUDUKOVICH, Dan	f	0	0	0	0	8	10	0	1	1	2	8	6	1	1	18	
33	NEUHOUSER, Jon	f	4	5	1	1	0	0	1	2	3	3	9	0	3	1	22	
44	van RIJN, Rolf	c	6	9	0	0	4	6	0	3	3	1	16	0	1	7	23	
10	GRAVES, Matthew	g	3	7	1	2	1	2	0	3	3	0	8	5	0	0	18	
23	FRAZIER, Otis	g	1	5	0	2	0	0	0	7	7	3	2	4	0	0	19	
03	HIRSCHY, Andy		2	2	1	1	0	0	0	3	3	0	5	3	0	0	17	
11	GRAVES, Andrew		0	0	0	0	0	0	0	1	1	0	0	1	0	0	9	
21	PFLUGNER, Mike		0	0	0	0	0	1	0	2	2	3	0	0	2	0	9	
22	MARSHALL, Mike		2	5	0	0	3	4	4	2	6	3	7	1	2	0	15	
25	JORDAN, LaVall		1	3	0	2	2	2	0	3	3	0	4	1	2	0	18	
32	MYERS, Jason		0	1	0	0	2	2	0	1	1	0	2	1	2	0	6	
34	HICKS, Michael		3	3	3	3	0	0	0	1	1	3	9	1	4	0	13	
54	GIESECK, Bjorn		5	5	0	0	3	5	0	3	3	1	13	0	1	1	13	
TEAM REBOUNDS.....								0	3	3								
TOTALS			27	45	6	11	23	32	5	35	40	19	83	23	19	10	7	200

TOTAL FG% 1st Half:	15-26	.577	2nd Half:	12-19	.632	Game:	.600	DEADBALL
3-Pt. FG% 1st Half:	4-6	.667	2nd Half:	2-5	.400	Game:	.545	REBOUNDS
F Throw % 1st Half:	11-14	.786	2nd Half:	12-18	.667	Game:	.719	4, 3

OFFICIALS: Glenn Mayborg, John Jasin, Jim Copenhaver

TECHNICAL FOULS:

IUPUI - none
 Butler University - none

ATTENDANCE: 3225

SCORE BY PERIODS:	1st	2nd	OT1	OT2	OT3	OT4	TOTAL
IUPUI	19	25					44
Butler University	45	38					83

SITE: Hinkle Fieldhouse

DATE: 12-10-97 7 p.m.

- - - F I R S T H A L F P L A Y B Y
HOME TEAM: Butler University TIME SCORE MAR

P L A Y - - -
VISITORS: IUPUI

made LAYUP by van RIJN, Rol 19:45 2-0 H 2

ASSIST by DUDUKOVICH, D 19:45

BLOCKED by van RIJN, Rol 19:21

made 3-PNTR by NEUHOUSER, Jo 19:04 5-0 H 5

ASSIST by FRAZIER, Otis 19:04

made LAYUP by van RIJN, Rol 17:54 7-0 H 7

ASSIST by FRAZIER, Otis 17:54

BLOCKED by van RIJN, Rol 17:31

BLOCKED by van RIJN, Rol 17:25

made LAYUP by GRAVES, Matth 16:51 9-2 H 7

ASSIST by DUDUKOVICH, D 16:51

made LAYUP by GRAVES, Matth 16:31 9-5 H 4

ASSIST by DUDUKOVICH, D 16:31

made LAYUP by van RIJN, Rol 16:12 11-5 H 6

ASSIST by DUDUKOVICH, D 16:12

made JUMPER by NEUHOUSER, Jo 15:30 13-5 H 8

ASSIST by DUDUKOVICH, D 15:30

made LAYUP by van RIJN, Rol 15:27

ASSIST by DUDUKOVICH, D 15:08 13-7 H 6

BLOCKED by DUDUKOVICH, D 14:53

BLOCKED by van RIJN, Rol 14:49

BLOCKED by van RIJN, Rol 14:33

BLOCKED by van RIJN, Rol 12:37

made 3-PNTR by THOMAS, Rodne 12:21 13-10 H 3

ASSIST by PRICE, Charle 12:21

made JUMPER by REESE, J.T. 11:50 13-12 H 1

ASSIST by REESE, J.T. 11:50

made 3-PNTR by HICKS, Michae 11:26 16-12 H 4

ASSIST by MARSHALL, Mik 11:26

made 3-PNTR by HIRSCHY, Andy 10:17 19-12 H 7

ASSIST by GRAVES, Matth 10:17

made LAYUP by MARSHALL, Mik 09:25 21-12 H 9

ASSIST by GRAVES, Matth 08:52 23-12 H11

made JUMPER by GIESECK, Bjor 08:52

ASSIST by GRAVES, Matth 08:07 24-12 H12

made F THROW by DUDUKOVICH, D 08:07 25-12 H13

made F THROW by DUDUKOVICH, D 08:07

made LAYUP by HIRSCHY, Andy 07:52 27-12 H15

ASSIST by FRAZIER, Otis 07:40 27-12 H15

ASSIST by FRAZIER, Otis 07:40

made LAYUP by CARLISLE, Don 07:23 27-14 H13

ASSIST by CARLISLE, Don 07:09

BLOCKED by PRICE, Charle 07:09

BLOCKED by GIESECK, Bjor 07:03

made LAYUP by GIESECK, Bjor 06:59 29-14 H15

ASSIST by GRAVES, Matth 06:59

made F THROW by GIESECK, Bjor 06:59 30-14 H16

made 3-PNTR by GRAVES, Matth 06:25 33-14 H19

ASSIST by FRAZIER, Otis 06:25

BLOCKED by DUDUKOVICH, D 06:22

made F THROW by DUDUKOVICH, D 05:57

made F THROW by DUDUKOVICH, D 05:02 34-14 H20

made F THROW by DUDUKOVICH, D 04:35 35-14 H21

made F THROW by DUDUKOVICH, D 04:35 36-14 H22

BLOCKED by van RIJN, Rol 04:03

made LAYUP by WITHERSPOON, 03:59 36-16 H20

ASSIST by WITHERSPOON, 03:40

made F THROW by KNOX, Carlos 03:29 36-17 H19

made DUNK by CARLISLE, Don 02:45 36-19 H17

made JUMPER by REESE, J.T.

made 3-PNTR by THOMAS, Rodne
ASSIST by REESE, J.T.

--- TIMEOUT # 1 ---

made JUMPER by REESE, J.T.

BLOCKED by DICKEY, David

--- MEDIA TIMEOUT ---

BLOCKED by DICKEY, David

BLOCKED by DICKEY, David

made 3-PNTR by THOMAS, Rodne

ASSIST by PRICE, Charle

made JUMPER by REESE, J.T.

made LAYUP by CARLISLE, Don
BLOCKED by PRICE, Charle

--- TIMEOUT # 2 ---

made LAYUP by WITHERSPOON,
--- MEDIA TIMEOUT ---

made F THROW by KNOX, Carlos

made DUNK by CARLISLE, Don

HOME TEAM: Butler University TIME SCORE MAR VISITORS: IUPUI

	TIME	SCORE	MAR	
	02:45			ASSIST by KNOX, Carlos
made F THROW by GRAVES, Matth	02:06	37-19	H18	
made LAYUP by van RIJN, Rol	01:50	39-19	H20	
ASSIST by GRAVES, Matth	01:50			
BLOCKED by NEUHOUSER, Jo	01:35			
made JUMPER by NEUHOUSER, Jo	01:16	41-19	H22	
made F THROW by JORDAN, LaVal	01:01	42-19	H23	
made F THROW by JORDAN, LaVal	01:01	43-19	H24	
made F THROW by van RIJN, Rol	00:18	44-19	H25	
made F THROW by van RIJN, Rol	00:18	45-19	H26	

SCORE: Butler University 45 IUPUI 19

OFFICIAL BASKETBALL BOX SCORE -- F I R S T H A L F

IUPUI vs Butler University
 12-10-97 7 p.m. at Hinkle Fieldhouse

VISITORS: IUPUI

No.	N A M E	TOT-FG		3-PT		FT	FTA	REBOUNDS			PF	TP	A	TO	BLK	S	MIN
		FG	FGA	FG	FGA			OF	DE	TOT							
30	CARLISLE, Don	f	2	5	0	0	0	0	1	2	3	2	4	0	1	0	11
33	WILLIAMS, Derek	f	0	1	0	0	0	0	1	0	1	2	0	0	1	0	7
44	OVERSTREET, Marcus	c	0	2	0	0	0	0	1	1	2	2	0	0	0	0	4
00	REESE, J.T.	g	3	10	0	1	0	0	1	0	1	0	6	1	1	0	15
34	KNOX, Carlos	g	0	5	0	2	1	2	0	1	1	1	1	1	4	0	13
10	GARDNER, Jermaine		0	0	0	0	0	0	0	0	0	1	0	0	0	0	2
20	DAVID, Nick		0	0	0	0	0	0	0	0	0	0	0	0	0	0	9
21	THOMAS, Rodney		2	3	2	3	0	0	0	2	2	1	6	0	0	0	14
23	WITHERSPOON, Mohamme		1	3	0	0	0	0	2	0	2	0	2	0	0	0	6
25	DICKEY, David		0	1	0	0	0	1	0	1	1	1	0	0	1	3	10
54	PRICE, Charles		0	2	0	0	0	0	0	2	2	3	0	1	0	1	8
55	CRICK, Ryan		0	0	0	0	0	0	0	0	0	0	0	0	0	0	1
TEAM REBOUNDS.....								0	0	0							
TOTALS			8	32	2	6	1	3	6	9	15	13	19	3	8	4	2 100

TOTAL FG% 1st Half:	8-32	.250	2nd Half:	0-0	.000	Game:	.250	DEADBALL
3-Pt. FG% 1st Half:	2-6	.333	2nd Half:	0-0	.000	Game:	.333	REBOUNDS
F Throw % 1st Half:	1-3	.333	2nd Half:	0-0	.000	Game:	.333	1, 2

HOME TEAM: Butler University

No.	N A M E	TOT-FG		3-PT		FT	FTA	REBOUNDS			PF	TP	A	TO	BLK	S	MIN
		FG	FGA	FG	FGA			OF	DE	TOT							
13	DUDUKOVICH, Dan	f	0	0	0	0	5	6	0	1	1	2	5	4	0	1	11
33	NEUHOUSER, Jon	f	3	4	1	1	0	0	1	2	3	2	7	0	2	1	15
44	van RIJN, Rolf	c	4	6	0	0	2	2	0	1	1	0	10	0	0	4	15
10	GRAVES, Matthew	g	2	4	1	1	1	2	0	2	2	0	6	4	0	0	12
23	FRAZIER, Otis	g	0	4	0	2	0	0	0	4	4	2	0	4	0	0	11
03	HIRSCHY, Andy		2	2	1	1	0	0	0	0	0	0	5	0	0	0	5
11	GRAVES, Andrew		0	0	0	0	0	0	0	1	1	0	0	0	0	0	4
21	PFLUGNER, Mike		0	0	0	0	0	1	0	0	0	1	0	0	0	0	2
22	MARSHALL, Mike		1	3	0	0	0	0	2	1	3	1	2	1	1	0	7
25	JORDAN, LaVall		0	0	0	0	2	2	0	2	2	0	2	0	0	0	8
32	MYERS, Jason		0	0	0	0	0	0	0	0	0	0	0	0	0	0	1
34	HICKS, Michael		1	1	1	1	0	0	0	0	0	1	3	0	3	0	4
54	GIESECK, Bjorn		2	2	0	0	1	1	0	1	1	0	5	0	0	1	5
TEAM REBOUNDS.....								0	2	2							
TOTALS			15	26	4	6	11	14	3	17	20	9	45	13	6	7	3 100

TOTAL FG% 1st Half:	15-26	.577	2nd Half:	0-0	.000	Game:	.577	DEADBALL
3-Pt. FG% 1st Half:	4-6	.667	2nd Half:	0-0	.000	Game:	.667	REBOUNDS
F Throw % 1st Half:	11-14	.786	2nd Half:	0-0	.000	Game:	.786	0, 2

OFFICIALS: Glenn Mayborg, John Jasin, Jim Copenhaver

TECHNICAL FOULS:

IUPUI - none
 Butler University - none

ATTENDANCE:

SCORE BY PERIODS:	1st	2nd	OT1	OT2	OT3	OT4	TOTAL
IUPUI	19	0					19
Butler University	45	0					45

HOME TEAM: Butler University TIME SCORE MAR VISITORS: IUPUI

BLOCKED by van RIJN, Rol	19:24				
made JUMPER by GRAVES, Matth	18:35	45-21	H24	made LAYUP by WITHERSPOON,	
made DUNK by van RIJN, Rol	18:02	47-21	H26		
made LAYUP by NEUHOUSER, Jo	17:15	49-21	H28		
made F THROW by DUDUKOVICH, D	16:41	51-21	H30		
---	16:15	51-23	H28	made LAYUP by GARDNER, Jerm	
---	15:59	52-23	H29		
---	15:46				
---	15:43	52-25	H27	made LAYUP by REESE, J.T.	
BLOCKED by van RIJN, Rol	14:44				
made F THROW by van RIJN, Rol	14:29	53-25	H28		
made F THROW by DUDUKOVICH, D	14:14	53-26	H27	made F THROW by GARDNER, Jerm	
made F THROW by DUDUKOVICH, D	14:11	54-26	H28		
made F THROW by DUDUKOVICH, D	14:11	55-26	H29		
made JUMPER by FRAZIER, Otis	13:25	57-26	H31		
made F THROW by van RIJN, Rol	13:14	57-29	H28	made 3-PNTR by CARLISLE, Don	
BLOCKED by van RIJN, Rol	12:59	57-32	H25	made 3-PNTR by CRICK, Ryan	
made LAYUP by van RIJN, Rol	12:44	58-32	H26		
---	12:30				
---	12:08	60-32	H28		
---	11:37			---	MEDIA TIMEOUT ---
made F THROW by GIESECK, Bjor	11:30	61-32	H29		
made F THROW by GIESECK, Bjor	10:33	61-33	H28	made F THROW by CARLISLE, Don	
made F THROW by MARSHALL, Mik	10:13	62-33	H29		
made F THROW by MARSHALL, Mik	09:44	63-33	H30		
made F THROW by MARSHALL, Mik	09:44	64-33	H31		
made LAYUP by GIESECK, Bjor	08:51	64-34	H30	made F THROW by THOMAS, Rodne	
made DUNK by GIESECK, Bjor	08:51	64-35	H29	made F THROW by THOMAS, Rodne	
---	08:32	66-35	H31		
---	08:15	68-35	H33		
---	07:29			---	MEDIA TIMEOUT ---
made DUNK by MARSHALL, Mik	06:06	68-37	H31	made JUMPER by CARLISLE, Don	
made JUMPER by GIESECK, Bjor	05:48	70-37	H33		
made F THROW by MARSHALL, Mik	05:22	72-37	H35		
---	04:52	73-37	H36		
---	04:34	73-40	H33	made 3-PNTR by DAVID, Nick	
---	03:39	73-43	H30	made 3-PNTR by REESE, J.T.	
made F THROW by MYERS, Jason	03:24	74-43	H31		
made F THROW by MYERS, Jason	03:24	75-43	H32		
---	03:24				
---	02:43	75-44	H31	made F THROW by WITHERSPOON,	
made LAYUP by JORDAN, LaVal	02:00	77-44	H33		
---	01:31				
---	00:25	80-44	H36		
---	00:02	83-44	H39		

SCORE: Butler University 83 IUPUI 44

NCAA® BASKETBALL SHOT CHART

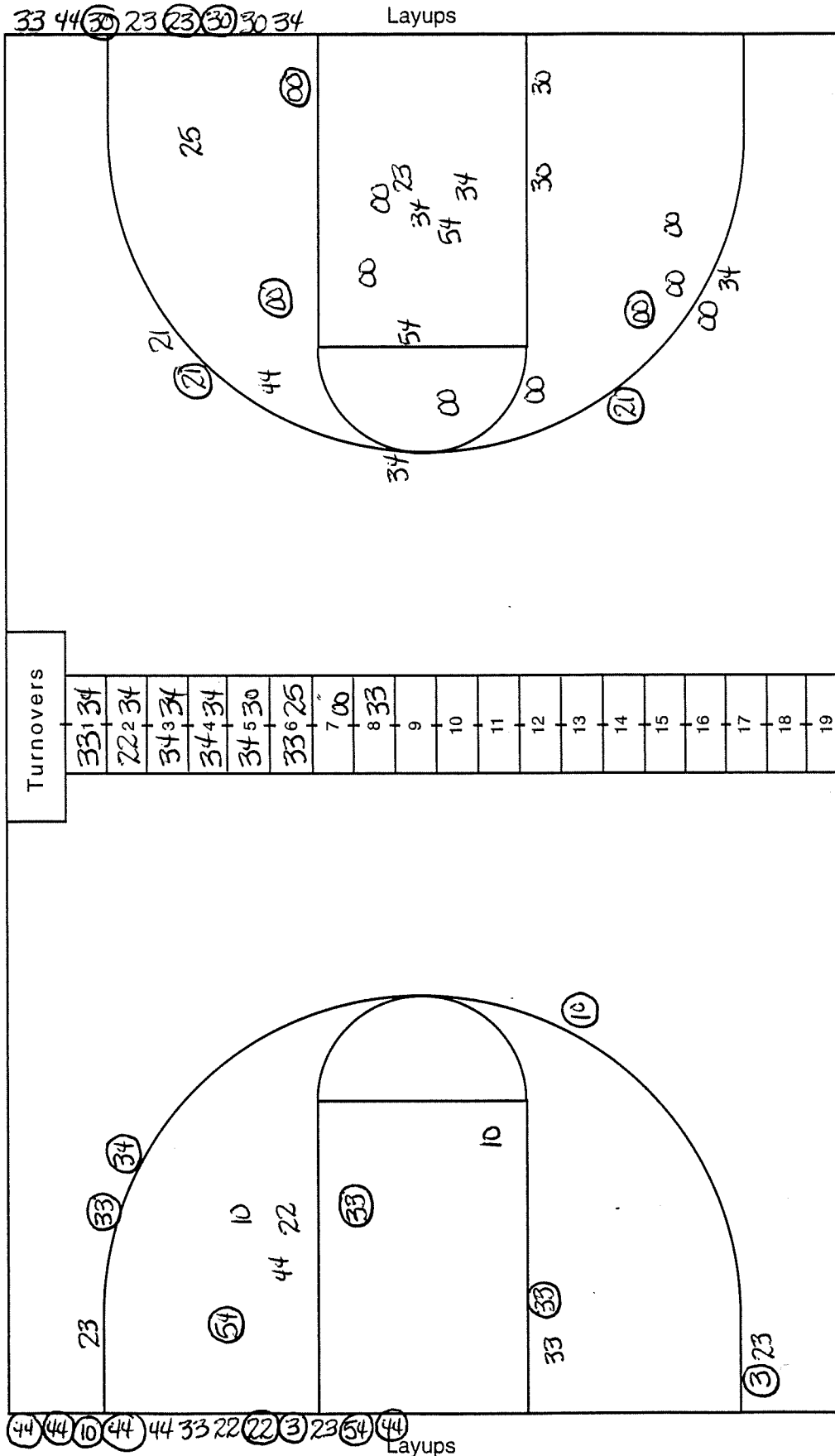
First Half

Second Half

(Circle one)

Team LOUPOI

Team BUTLER



Attempted 32
 Made 8
 Percentage .250

Attempted 26
 Made 15
 Percentage .577

NCAA® BASKETBALL SHOT CHART

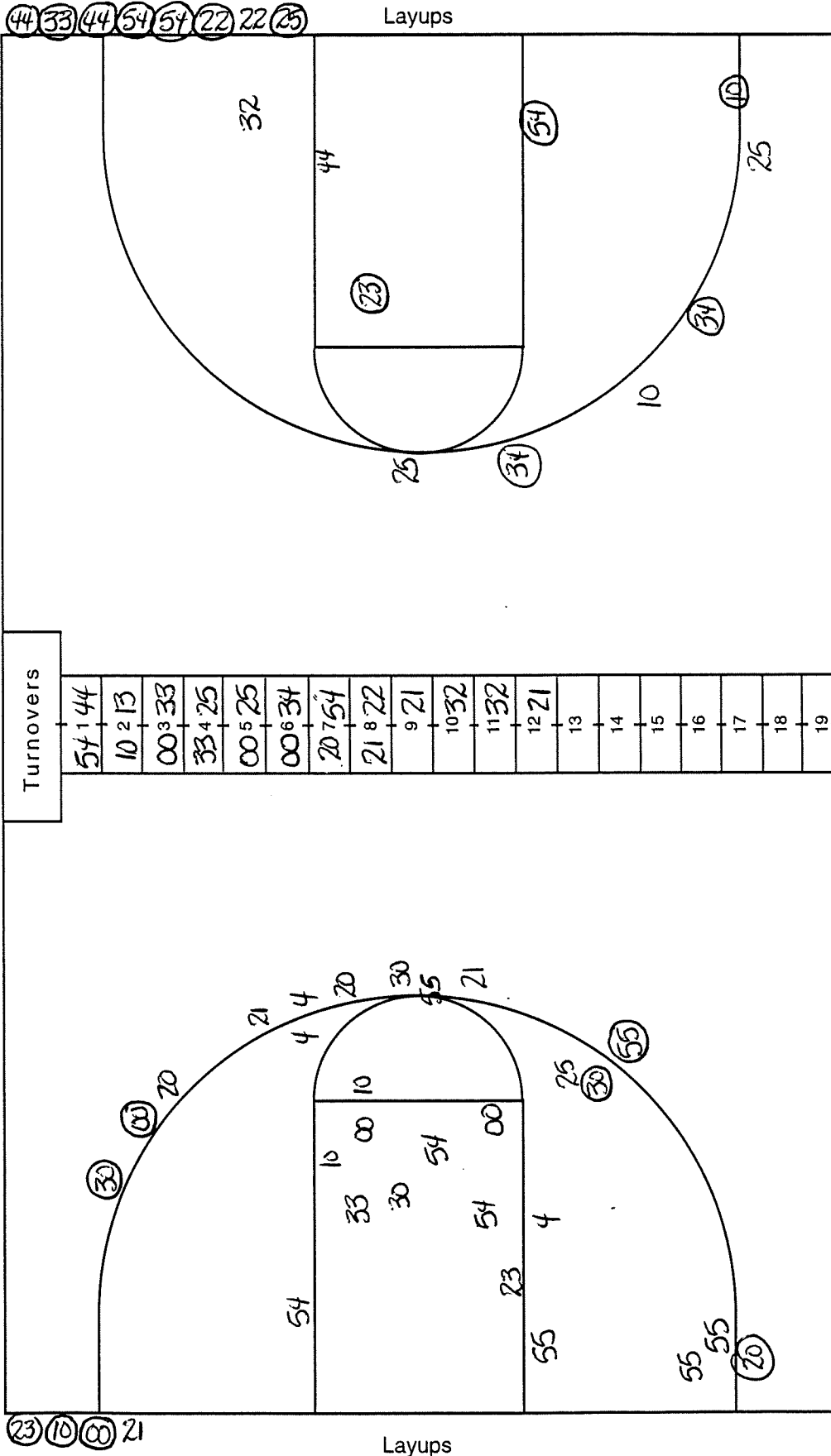
First Half

Second Half

(Circle one)

Team BUICK

Team IUPOI



Attempted 19
 Made 12
 Percentage .632

Attempted 31
 Made 8
 Percentage .258