

OFFICIAL BASKETBALL BOX SCORE -- G A M E T O T A L S

IUPUI vs Southern Utah

1/20/02 7:35 p.m. at Cedar City, UT

VISITORS: IUPUI 5-11,1-4 Mid-Con

No.	N A M E	TOT-FG		3-PT		FT	FTA	REBOUNDS			PF	TP	A	TO	BLK	S	MIN	
		FG	FGA	FG	FGA			OF	DE	TOT								
30	CARLISLE, Don	f	8	14	0	1	6	6	6	4	10	4	22	1	2	0	1	36
35	FITZWATER, Josh	f	3	6	0	2	4	6	0	2	2	5	10	0	1	0	0	23
54	PRICE, Charles	c	3	5	0	0	1	2	0	4	4	4	7	1	3	1	2	32
03	HAWKINS, Taj	g	0	1	0	0	2	3	0	2	2	1	2	3	3	1	0	24
20	ALLEN, Sylvester	g	6	13	0	3	1	1	1	1	2	3	13	2	4	0	1	32
21	CRENSHAW, Matt		0	0	0	0	9	10	0	0	0	2	9	1	3	0	2	15
25	HERMES, Matt		5	8	0	1	1	3	0	4	4	2	11	2	2	0	0	29
32	HOLLAND, Lonnie		0	2	0	1	0	0	0	0	0	1	0	0	1	0	1	8
33	WEBSTER, Will		0	0	0	0	0	0	0	0	0	0	0	0	1	0	0	1
TEAM									3	2	5							
TOTALS			25	49	0	8	24	31	10	19	29	22	74	10	20	2	7	200

TOTAL FG% 1st Half:	11-22	.500	2nd Half:	14-27	.519	Game:	.510	DEADBALL
3-Pt. FG% 1st Half:	0-4	.000	2nd Half:	0-4	.000	Game:	.000	REBOUNDS
F Throw % 1st Half:	8-12	.667	2nd Half:	16-19	.842	Game:	.774	4

HOME TEAM: Southern Utah 11-4,6-2 Mid-Con

No.	N A M E	TOT-FG		3-PT		FT	FTA	REBOUNDS			PF	TP	A	TO	BLK	S	MIN	
		FG	FGA	FG	FGA			OF	DE	TOT								
21	HOUSE, Frederick	f	6	9	2	3	4	6	0	6	6	3	18	5	4	2	1	34
33	BEUS, Dan	f	7	10	2	2	0	2	3	2	5	2	16	4	4	0	1	31
44	WHEELER, John	c	2	5	0	0	3	5	1	3	4	4	7	0	0	1	0	26
22	SANT, Justin	g	4	9	2	4	2	3	0	2	2	2	12	4	0	0	1	33
32	MONACO, Jeff	g	8	11	7	9	0	0	1	2	3	1	23	9	3	0	5	36
12	BAKER, Jason		1	1	0	0	0	0	0	0	0	0	2	1	0	0	0	2
23	JOHNSON, Stan		0	1	0	1	2	2	0	0	0	3	2	0	3	0	0	13
25	GARDNER, Brian		0	0	0	0	0	0	0	0	0	0	0	0	0	0	0	0+
30	CHANDLER, B.J.		2	3	0	0	0	0	0	1	1	2	4	0	1	0	0	7
34	DAY, Ross		0	0	0	0	0	0	0	0	0	1	0	0	1	0	0	3
35	DORENBOSCH, Jeff		0	0	0	0	0	0	1	0	1	4	0	2	2	0	0	8
40	WALLIN, Chris		0	0	0	0	0	0	0	0	0	4	0	0	0	0	0	5
42	MILES, Aaron		1	1	0	0	0	0	0	0	0	0	2	0	0	0	0	2
TEAM									0	1	1							
TOTALS			31	50	13	19	11	18	6	17	23	26	86	25	18	3	8	200

TOTAL FG% 1st Half:	16-28	.571	2nd Half:	15-22	.682	Game:	.620	DEADBALL
3-Pt. FG% 1st Half:	9-14	.643	2nd Half:	4-5	.800	Game:	.684	REBOUNDS
F Throw % 1st Half:	4-7	.571	2nd Half:	7-11	.636	Game:	.611	1

OFFICIALS: Sam Licklitter, Darron George, Tony Garton

TECHNICAL FOULS:

IUPUI - none
 Southern Utah - none

ATTENDANCE: 4563

SCORE BY PERIODS:	1st	2nd	OT1	OT2	OT3	OT4	TOTAL
IUPUI	30	44					74
Southern Utah	45	41					86

OFFICIAL BASKETBALL BOX SCORE -- F I R S T H A L F -- END OF PERIOD 1

IUPUI vs Southern Utah
 1/20/02 7:35 p.m. at Cedar City, UT

VISITORS: IUPUI

No.	N A M E	TOT-FG		3-PT		FT		REBOUNDS			PF	TP	A	TO	BLK	S	MIN	
		FG	FGA	FG	FGA	FT	FTA	OF	DE	TOT								
30	CARLISLE, Don	f	2	2	0	0	4	4	1	3	4	2	8	1	1	0	0	16
35	FITZWATER, Josh	f	0	2	0	1	1	2	0	1	1	3	1	0	0	0	0	14
54	PRICE, Charles	c	2	3	0	0	0	0	0	2	2	1	4	0	2	1	1	17
03	HAWKINS, Taj	g	0	0	0	0	2	3	0	1	1	0	2	1	1	1	0	10
20	ALLEN, Sylvester	g	4	7	0	1	0	0	1	1	2	1	8	0	2	0	1	15
21	CRENSHAW, Matt		0	0	0	0	1	2	0	0	0	1	1	1	2	0	0	6
25	HERMES, Matt		3	6	0	1	0	1	0	2	2	1	6	2	1	0	0	17
32	HOLLAND, Lonnie		0	2	0	1	0	0	0	0	0	0	0	0	1	0	1	4
33	WEBSTER, Will		0	0	0	0	0	0	0	0	0	0	0	0	1	0	0	1
TEAM									0	1	1							
TOTALS			11	22	0	4	8	12	2	11	13	9	30	5	11	2	3	100

TOTAL FG% 1st Half:	11-22	.500	2nd Half:	0- 0	.000	Game:	.500	DEADBALL
3-Pt. FG% 1st Half:	0- 4	.000	2nd Half:	0- 0	.000	Game:	.000	REBOUNDS
F Throw % 1st Half:	8-12	.667	2nd Half:	0- 0	.000	Game:	.667	2

HOME TEAM: Southern Utah

No.	N A M E	TOT-FG		3-PT		FT		REBOUNDS			PF	TP	A	TO	BLK	S	MIN	
		FG	FGA	FG	FGA	FT	FTA	OF	DE	TOT								
21	HOUSE, Frederick	f	6	9	2	3	2	4	0	3	3	0	16	2	0	1	1	18
33	BEUS, Dan	f	3	5	2	2	0	1	1	1	2	1	8	2	4	0	1	15
44	WHEELER, John	c	0	1	0	0	0	0	0	3	3	1	0	0	0	0	0	12
22	SANT, Justin	g	0	2	0	1	0	0	0	0	0	0	0	3	0	0	1	15
32	MONACO, Jeff	g	5	7	5	7	0	0	1	2	3	0	15	3	0	0	3	17
12	BAKER, Jason		1	1	0	0	0	0	0	0	0	0	2	0	0	0	0	2
23	JOHNSON, Stan		0	1	0	1	2	2	0	0	0	1	2	0	0	0	0	6
30	CHANDLER, B.J.		1	2	0	0	0	0	0	1	1	1	2	0	1	0	0	5
34	DAY, Ross		0	0	0	0	0	0	0	0	0	1	0	0	1	0	0	2
35	DORENBOSCH, Jeff		0	0	0	0	0	0	1	0	1	2	0	2	1	0	0	4
40	WALLIN, Chris		0	0	0	0	0	0	0	0	0	3	0	0	0	0	0	4
TEAM									0	1	1							
TOTALS			16	28	9	14	4	7	3	11	14	10	45	12	7	1	6	100

TOTAL FG% 1st Half:	16-28	.571	2nd Half:	0- 0	.000	Game:	.571	DEADBALL
3-Pt. FG% 1st Half:	9-14	.643	2nd Half:	0- 0	.000	Game:	.643	REBOUNDS
F Throw % 1st Half:	4- 7	.571	2nd Half:	0- 0	.000	Game:	.571	1

OFFICIALS: Sam Lickliter, Darron George, Tony Garton

TECHNICAL FOULS:

IUPUI - none
 Southern Utah - none

ATTENDANCE:

SCORE BY PERIODS:	1st	2nd	OT1	OT2	OT3	OT4	TOTAL
IUPUI	30						30
Southern Utah	45						45

HOME TEAM	TIME	SCORE	MAR	VISITORS
made 3-PNTR by MONACO, Jeff	19:21	3-0	H 3	
made 3-PNTR by MONACO, Jeff	18:56	6-0	H 6	
made DUNK by HOUSE, Freder	18:27	8-0	H 8	
	18:23			--- TIMEOUT # 1 ---
	17:59	8-2	H 6	made LAYUP by CARLISLE, Don
made 3-PNTR by HOUSE, Freder	17:27	8-4	H 4	made LAYUP by PRICE, Charle
made LAYUP by HOUSE, Freder	17:09	11-4	H 7	
	16:38	13-4	H 9	
	16:37			FOUL on ALLEN, Sylves(P1T1)
made F THROW by HOUSE, Freder	16:36	14-4	H10	
made 3-PNTR by BEUS, Dan	16:06	17-4	H13	
	15:45	17-6	H11	made DUNK by PRICE, Charle
made JUMPER by HOUSE, Freder	15:22	19-6	H13	
	14:57			FOUL on CARLISLE, Don(P1T2)
--- TIMEOUT # 1 ---	14:57			
made LAYUP by HOUSE, Freder	14:31	21-6	H15	
	13:47			FOUL on CARLISLE, Don(P2T3)
made 3-PNTR by MONACO, Jeff	13:45	24-6	H18	
FOUL on WALLIN, Chris(P1T1)	13:07			
made 3-PNTR by MONACO, Jeff	12:26	27-6	H21	
	11:59			FOUL on PRICE, Charle(P1T4)
made F THROW by JOHNSON, Stan	11:59	28-6	H22	
made F THROW by JOHNSON, Stan	11:59	29-6	H23	
FOUL on WALLIN, Chris(P2T2)	11:42			
	11:42			missd F THROW by FITZWATER, Jo
--- TIMEOUT # 2 ---	11:42	29-7	H22	made F THROW by FITZWATER, Jo
	11:25			FOUL on FITZWATER, Jo(P1T5)
FOUL on JOHNSON, Stan(P1T3)	10:40			
	10:40			missd F THROW by CRENSHAW, Mat
FOUL on CHANDLER, B.J(P1T4)	10:40	29-8	H21	made F THROW by CRENSHAW, Mat
	10:25			FOUL on CRENSHAW, Mat(P1T6)
	09:54			made JUMPER by HERMES, Matt
FOUL on WHEELER, John(P1T5)	09:30	29-10	H19	made LAYUP by HERMES, Matt
	09:06	29-12	H17	
	09:06			missd F THROW by HERMES, Matt
	08:40			FOUL on HERMES, Matt (P1T7)
missd F THROW by HOUSE, Freder	08:40			
made F THROW by HOUSE, Freder	08:40	30-12	H18	
made 3-PNTR by MONACO, Jeff	08:15	33-12	H21	
--- TIMEOUT # 3 ---	07:55			
	07:26			FOUL on FITZWATER, Jo(P2T8)
missd F THROW by HOUSE, Freder	07:26			
FOUL on DORENBOSCH, J(P1T6)	07:16			
made LAYUP by BEUS, Dan	06:41	35-12	H23	
	06:22	35-14	H21	made LAYUP by CARLISLE, Don
made 3-PNTR by HOUSE, Freder	06:06	38-14	H24	
	05:38	38-16	H22	made LAYUP by ALLEN, Sylves
	05:07	38-18	H20	made LAYUP by ALLEN, Sylves
FOUL on DORENBOSCH, J(P2T7)	04:29			
	04:29	38-19	H19	made F THROW by CARLISLE, Don
made LAYUP by BAKER, Jason	04:29	38-20	H18	made F THROW by CARLISLE, Don
	04:02	40-20	H20	
FOUL on BEUS, Dan (P1T8)	03:49	40-22	H18	made JUMPER by ALLEN, Sylves
	03:36			
FOUL on DAY, Ross (P1T9)	03:36			missd F THROW by HAWKINS, Taj
	03:17			
	03:17	40-23	H17	made F THROW by HAWKINS, Taj
--- TIMEOUT # 4 ---	03:17	40-24	H16	made F THROW by HAWKINS, Taj
made JUMPER by CHANDLER, B.J	03:17			
FOUL on WALLIN, Chris(P3T10)	03:04	42-24	H18	
	02:33			
	02:33	42-25	H17	made F THROW by CARLISLE, Don
	02:33	42-26	H16	made F THROW by CARLISLE, Don
	01:44	42-28	H14	made LAYUP by ALLEN, Sylves
	01:05			FOUL on FITZWATER, Jo(P3T9)
missd F THROW by BEUS, Dan	01:05			
	00:46	42-30	H12	
made 3-PNTR by BEUS, Dan	00:46	45-30	H15	made LAYUP by HERMES, Matt
	00:11			

IUPUI at Southern Utah		1/20/02	7:35 p.m.		
HOME TEAM: Southern Utah		SCORE	MAR	VISITORS: IUPUI	
TIME	PLAY	SCORE	MAR	PLAY	
made LAYUP by BEUS, Dan	19:33	47-30	H17		
FOUL on BEUS, Dan (P2T1)	18:50				
made LAYUP by MONACO, Jeff	18:33	49-30	H19		
FOUL on WHEELER, John (P2T2)	18:13				
FOUL on HOUSE, Freder (P1T3)	17:57	49-32	H17	made LAYUP by ALLEN, Sylves	
FOUL on HOUSE, Freder (P2T4)	17:11			FOUL on FITZWATER, Jo (P4T1)	
made LAYUP by WHEELER, John	17:09			made LAYUP by PRICE, Charle	
missd F THROW by WHEELER, John	16:50	49-34	H15	FOUL on PRICE, Charle (P2T2)	
made 3-PNTR by MONACO, Jeff	16:31	51-34	H17		
made LAYUP by BEUS, Dan	16:15				
missd F THROW by WHEELER, John	16:14			FOUL on HAWKINS, Taj (P1T3)	
made 3-PNTR by MONACO, Jeff	16:10	54-34	H20		
made LAYUP by BEUS, Dan	15:41	56-34	H22		
missd F THROW by BEUS, Dan	15:41			--- TIMEOUT # 1 ---	
FOUL on SANT, Justin (P1T5)	15:27			made DUNK by CARLISLE, Don	
made 3-PNTR by MONACO, Jeff	15:19	56-36	H20		
made LAYUP by SANT, Justin	14:58	59-36	H23		
FOUL on WALLIN, Chris (P4T6)	14:29	61-36	H25		
FOUL on JOHNSON, Stan (P2T7)	14:16			missd F THROW by HERMES, Matt	
	14:16	61-37	H24	made F THROW by HERMES, Matt	
	14:09			made F THROW by CRENSHAW, Mat	
	14:09	61-38	H23	made F THROW by CRENSHAW, Mat	
	14:09	61-39	H22	FOUL on HERMES, Matt (P2T4)	
	13:50			FOUL on PRICE, Charle (P3T5)	
made F THROW by WHEELER, John	13:46				
missd F THROW by WHEELER, John	13:46	62-39	H23		
made JUMPER by CHANDLER, B.J	13:40			FOUL on ALLEN, Sylves (P2T6)	
FOUL on CHANDLER, B.J (P2T8)	13:30	64-39	H25		
FOUL on JOHNSON, Stan (P3T9)	13:04			missd F THROW by PRICE, Charle	
	13:04	64-40	H24	made F THROW by PRICE, Charle	
	12:27			made F THROW by CRENSHAW, Mat	
	12:27	64-41	H23	made F THROW by CRENSHAW, Mat	
--- 20sec TIMEOUT ---	12:27	64-42	H22		
	12:20			made LAYUP by CARLISLE, Don	
	11:41	64-44	H20	--- TIMEOUT # 2 ---	
	11:24			made JUMPER by FITZWATER, Jo	
made 3-PNTR by SANT, Justin	11:03	64-46	H18	made LAYUP by FITZWATER, Jo	
FOUL on SANT, Justin (P2T10)	10:19	64-48	H16		
	09:49	67-48	H19	made F THROW by CARLISLE, Don	
	09:21			made F THROW by CARLISLE, Don	
made 3-PNTR by SANT, Justin	09:21	67-49	H18		
FOUL on DORENBOSCH, J (P3T11)	09:09	67-50	H17	made F THROW by CARLISLE, Don	
	09:09	70-50	H20		
	08:54			made F THROW by FITZWATER, Jo	
	08:54	70-51	H19	made F THROW by FITZWATER, Jo	
--- 20sec TIMEOUT ---	08:54	70-52	H18		
	08:38			made LAYUP by CARLISLE, Don	
FOUL on DORENBOSCH, J (P4T12)	08:14	70-54	H16	made LAYUP by FITZWATER, Jo	
	07:29	70-56	H14		
	07:00			made F THROW by FITZWATER, Jo	
	06:59	70-57	H13	missd F THROW by FITZWATER, Jo	
	06:59			FOUL on FITZWATER, Jo (P5T7)	
missd F THROW by SANT, Justin	06:52			--- 20sec TIMEOUT ---	
	06:52			made LAYUP by CARLISLE, Don	
made LAYUP by BEUS, Dan	06:30				
	06:04	72-57	H15		
made LAYUP by WHEELER, John	05:33	72-59	H13	made F THROW by CRENSHAW, Mat	
FOUL on MONACO, Jeff (P1T13)	05:20	74-59	H15	made F THROW by CRENSHAW, Mat	
	05:09			--- TIMEOUT # 3 ---	
	05:09	74-60	H14	made LAYUP by HERMES, Matt	
	05:09	74-61	H13		
	05:09			made LAYUP by HERMES, Matt	
--- 20sec TIMEOUT ---	04:35	74-63	H11		
made LAYUP by SANT, Justin	04:21			FOUL on CARLISLE, Don (P3T8)	
	04:11	76-63	H13		
	03:52			made LAYUP by BEUS, Dan	
--- TIMEOUT # 1 ---	03:52			FOUL on PRICE, Charle (P4T9)	
made LAYUP by BEUS, Dan	03:32	78-63	H15		
	02:45				
made F THROW by HOUSE, Freder	02:45	79-63	H16		

made F THROW by HOUSE, Freder	02:45	80-63	H17	
FOUL on HOUSE, Freder(P3T14)	02:31			
	02:25			FOUL on CRENSHAW, Mat(P2T10)
	02:16			FOUL on HOLLAND, Lonn(P1T11)
made F THROW by WHEELER, John	02:16	81-63	H18	
made F THROW by WHEELER, John	02:16	82-63	H19	
FOUL on WHEELER, John(P3T15)	01:59			
	01:59	82-64	H18	made F THROW by CRENSHAW, Mat
	01:59	82-65	H17	made F THROW by CRENSHAW, Mat
	01:59			--- TIMEOUT # 4 ---
	01:24	82-67	H15	made LAYUP by HERMES, Matt
	01:23			--- 20sec TIMEOUT ---
	01:13	82-69	H13	made LAYUP by CARLISLE, Don
	01:12			--- 20sec TIMEOUT ---
	00:37	82-71	H11	made LAYUP by ALLEN, Sylves
FOUL on WHEELER, John(P4T16)	00:37			
	00:37	82-72	H10	made F THROW by ALLEN, Sylves
	00:29			FOUL on CARLISLE, Don(P4T12)
made F THROW by SANT, Justin	00:29	83-72	H11	
made F THROW by SANT, Justin	00:29	84-72	H12	
	00:24			
made LAYUP by MILES, Aaron	00:15	86-72	H14	FOUL on ALLEN, Sylves(P3T13)
	00:07	86-74	H12	made LAYUP by CARLISLE, Don
SCORE: Southern Utah		86	IUPUI	74

NCAA® BASKETBALL SHOT CHART

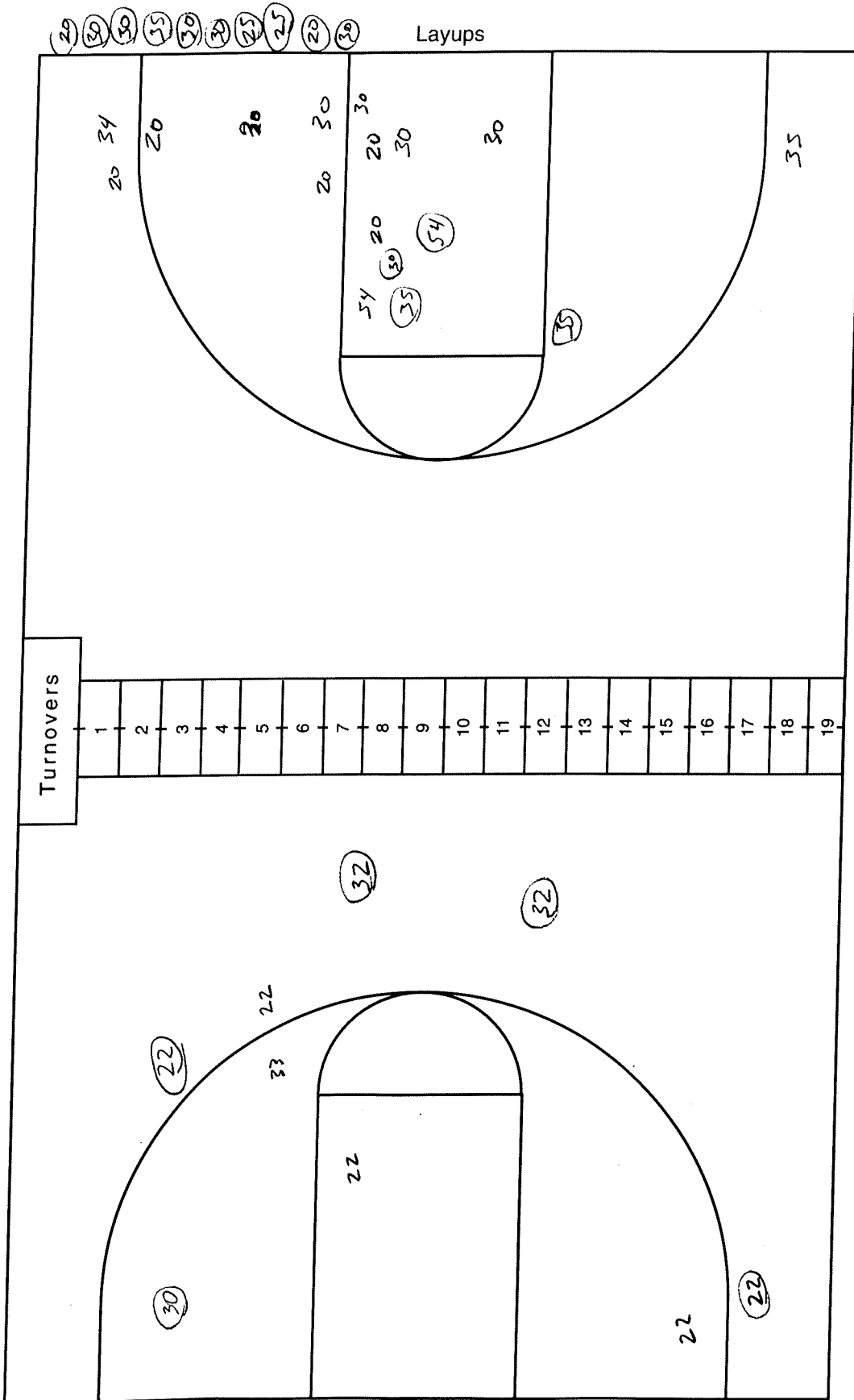
First Half

Second Half

(Circle one)

Team IUPUI

Team Southern Utah University



Attempted _____
 Made _____
 Percentage _____

Attempted _____
 Made _____
 Percentage _____